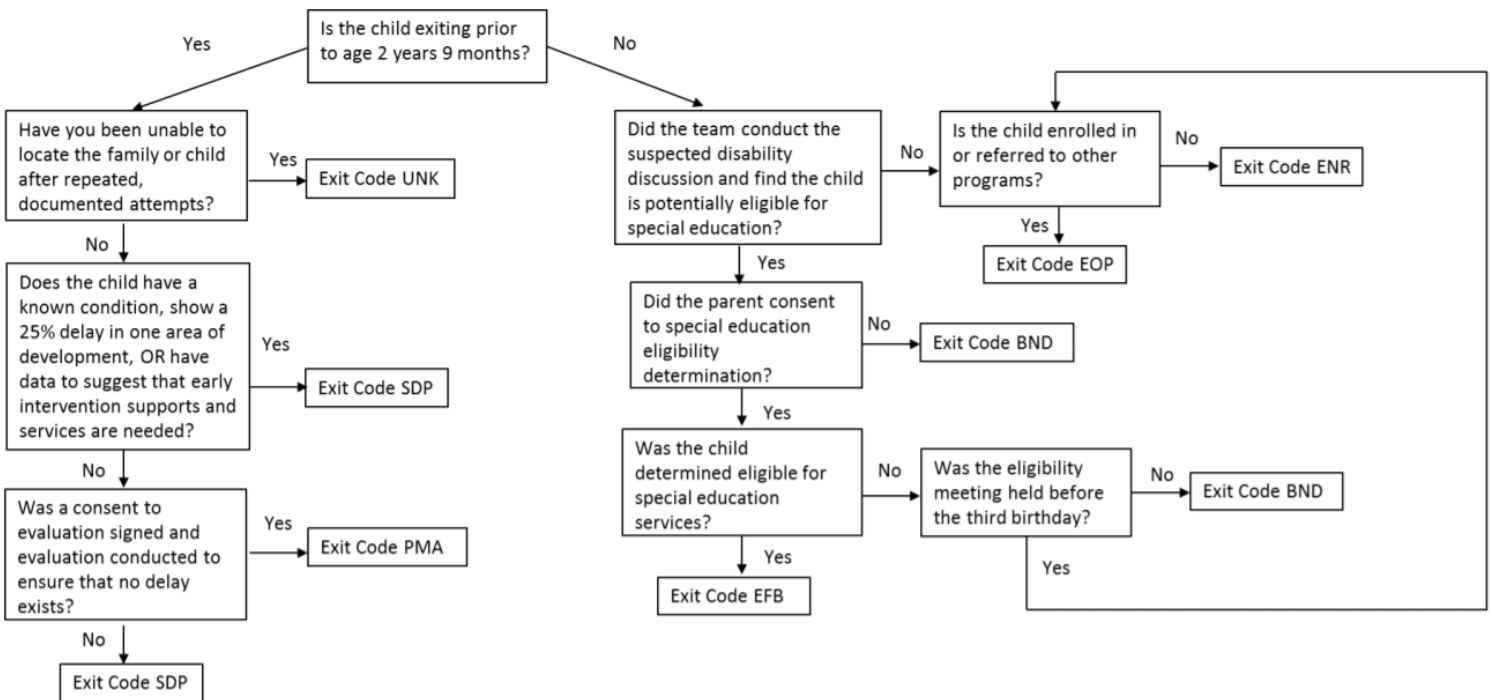


Early ACCESS (IDEA Part C) Exit Code Decision Flowchart



BND = Part B eligibility not determined
 EFB = Eligible for Part B (special education), exiting Part C at age Three
 ENR = Not Eligible for Part B (special education), exited with no referrals
 EOP = Not eligible for Part B (special education), exited with referrals to other programs
 PMA = Program Completion prior to age three
 SDP = Services declined by parent
 UNK = Unknown/ Attempts to contact unsuccessful

DEC = Deceased
 CMV = Move out of state

Codes not included in flow chart