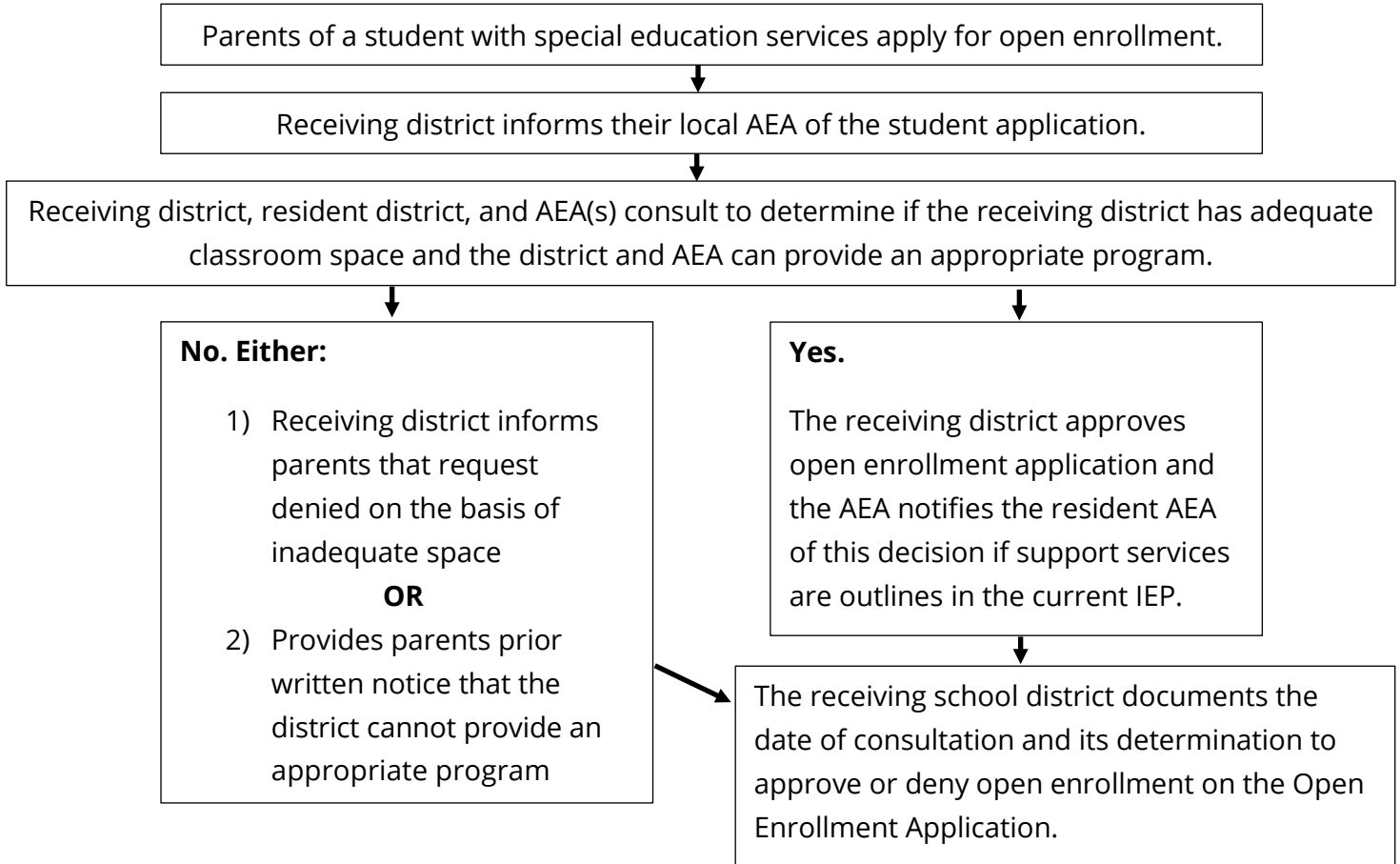


# Open Enrollment



If the appropriateness of the special education program in the receiving district is at issue, the final determination of the appropriateness of a special education instructional program shall be the responsibility of the AEA Director of Special Education in which the potential receiving district is located. Any party questioning this determination may request that the AEA Director of Special Education in which the potential receiving district is located review this determination. This request must be in writing.

The AEA Director of Special Education in which the potential receiving district is located will issue a written decision. See model letter on the following page.

**Note:** This process also applies to open enrollment to a district with a virtual school. In these situations, if an IEP includes AEA support services, the sending and receiving AEAs establish service delivery arrangements.